

BASRA 310,000 DWT Crude Oil Tanker 4

[Contents](#)

[By Builder](#)

[By Ship Type](#)

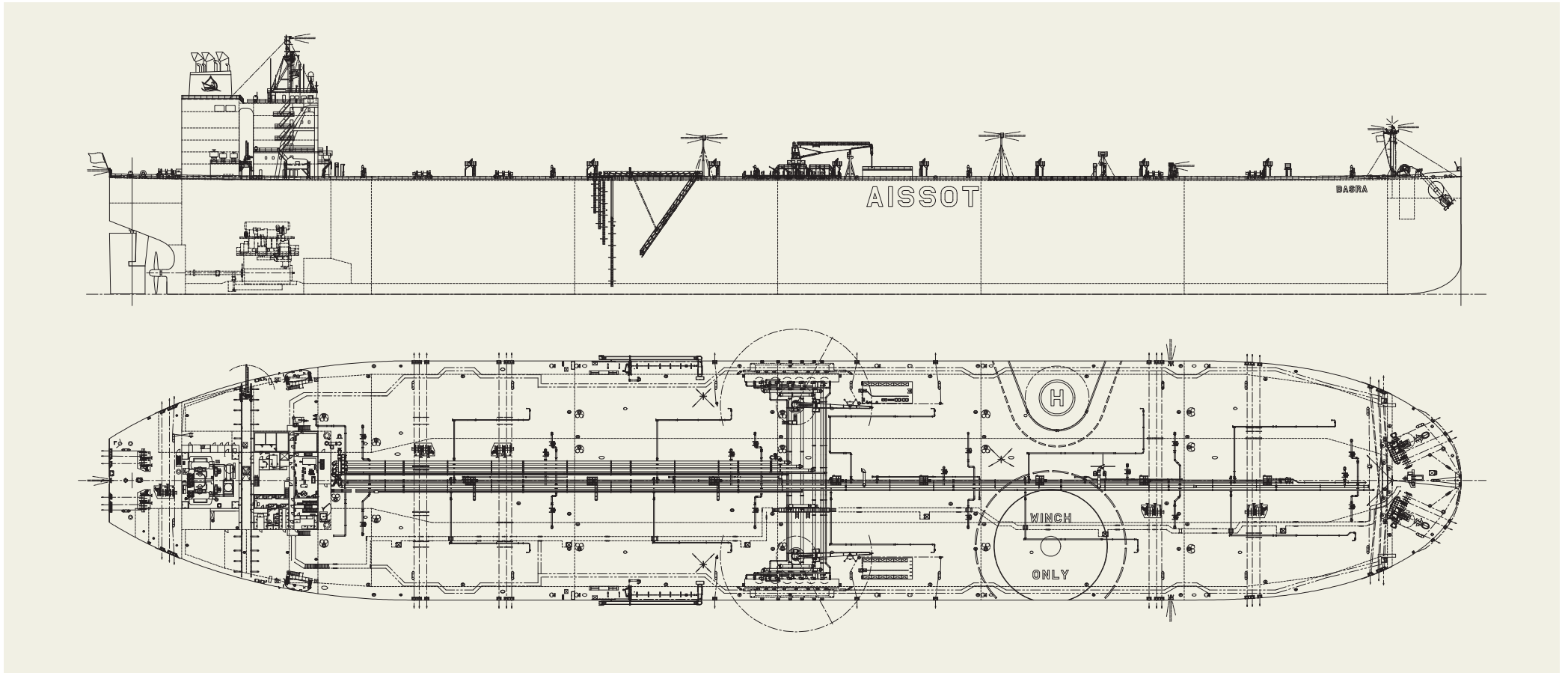


BASRA 310,000 DWT Crude Oil Tanker 4

Contents

By Builder

By Ship Type



PRINCIPAL PARTICULARS

Breadth (mld.).....	60 m	MCR (kw x rpm)	24,000 x 61
Depth (mld.).....	28.5 m	Speed (service).....	15.5 knots
Gross tonnage.....	160,087	Classification.....	ABS
Deadweight.....	312,965	Builder:	Imabari Shipbuilding Co., Ltd.

PORT KYOTO 64,000 DWT Bulk Carrier 40

[Contents](#)

[By Builder](#)

[By Ship Type](#)

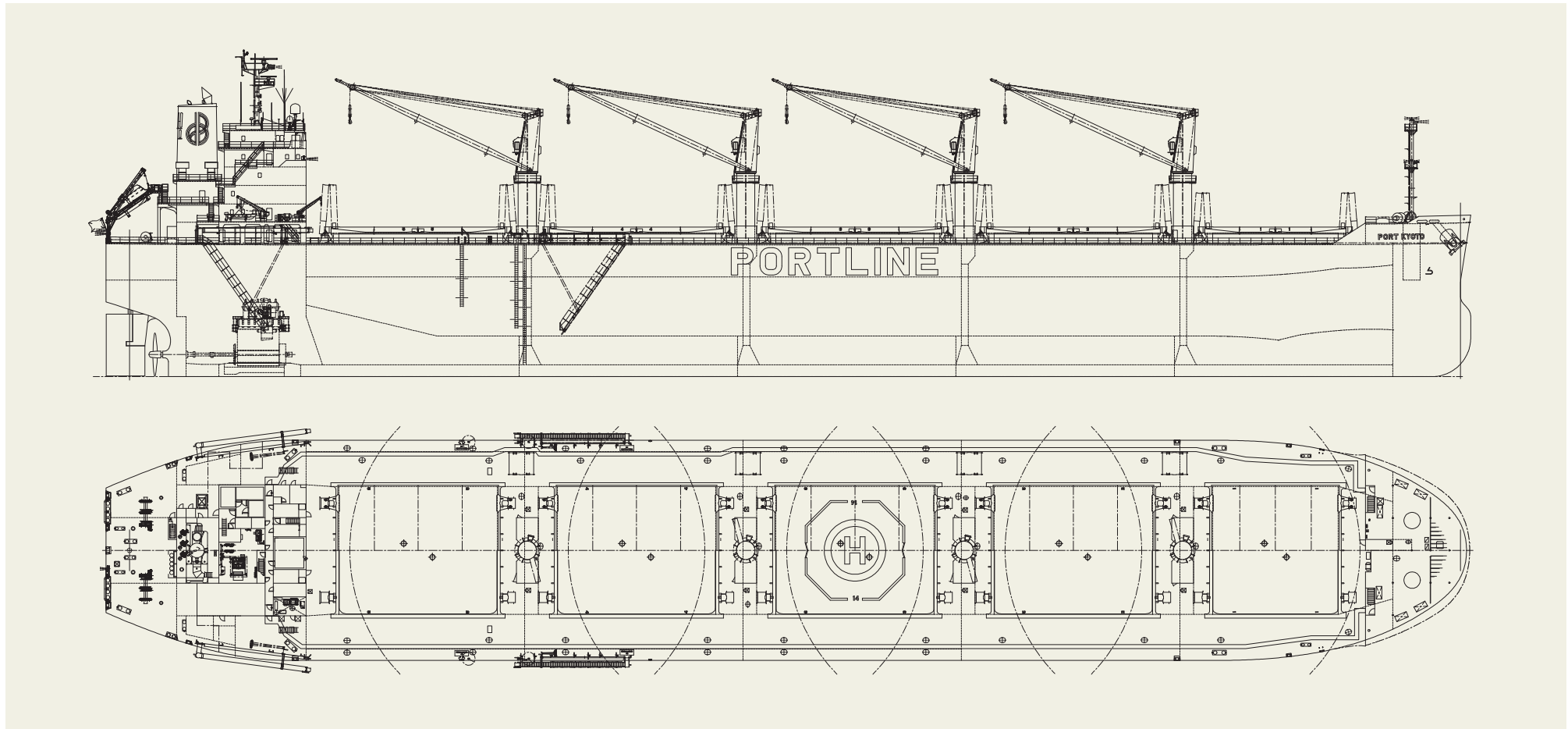


PORT KYOTO 64,000 DWT Bulk Carrier 40

Contents

By Builder

By Ship Type

**PRINCIPAL PARTICULARS**

Breadth (mld.).....	32.24 m	Deadweight.....	63,733
Depth (mld.).....	19.3 m	MCR (kw x rpm)	6,670 x 95
Gross tonnage.....	36,177	Speed (service).....	14 knots
		Builder:	Shin Kasado Dockyard Co., Ltd.

NORD AEGEAN 64,000 DWT Bulk Carrier 41

[Contents](#)

[By Builder](#)

[By Ship Type](#)

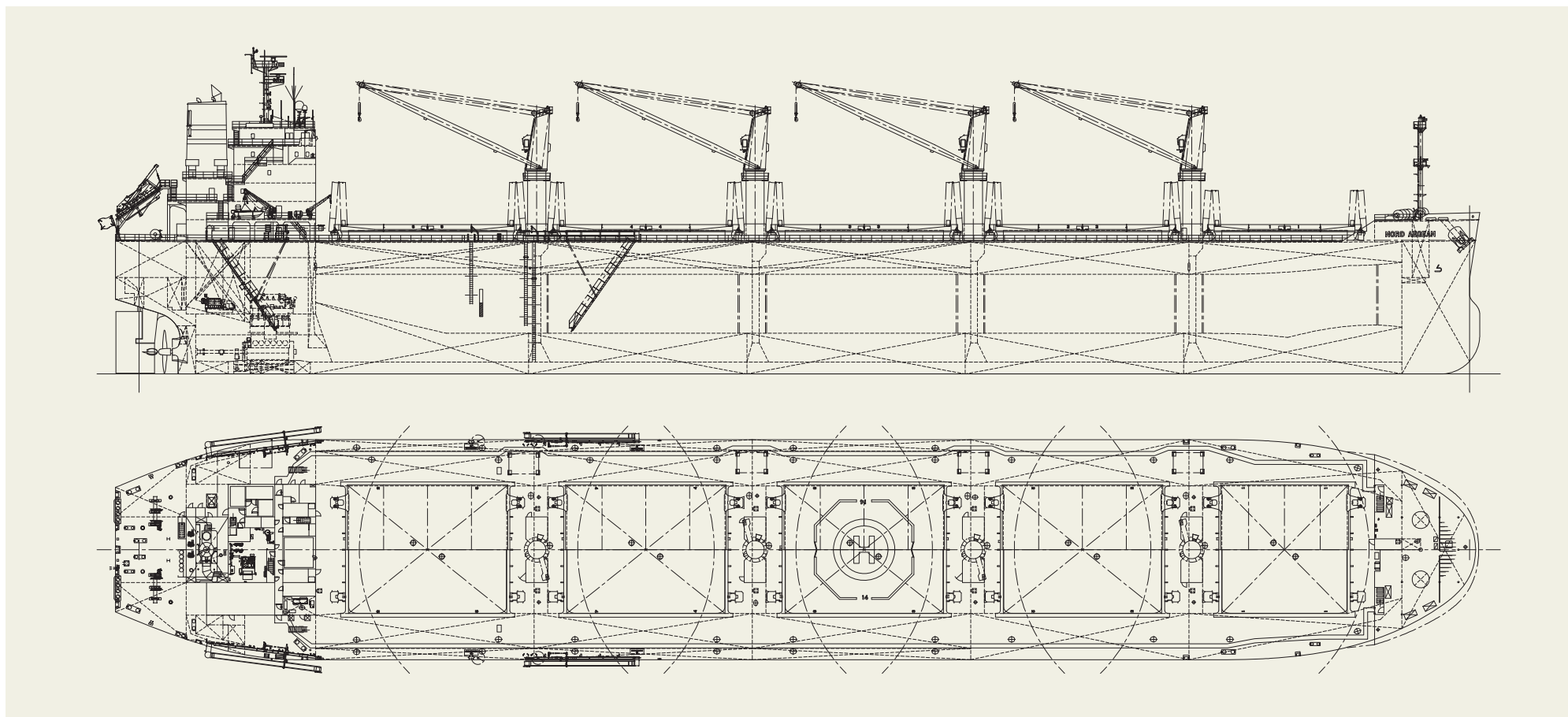


NORD AEGEAN 64,000 DWT Bulk Carrier 41

Contents

By Builder

By Ship Type

**PRINCIPAL PARTICULARS**

Breadth (mld.).....	32.24 m	MCR (kw x rpm)	7,560 x 99.0
Depth (mld.).....	19.3 m	Speed (service).....	14.5 knots
Gross tonnage.....	36,177	Classification	NK
Deadweight.....	63,702	Builder:	Minaminippon Shipbuilding Co., Ltd.

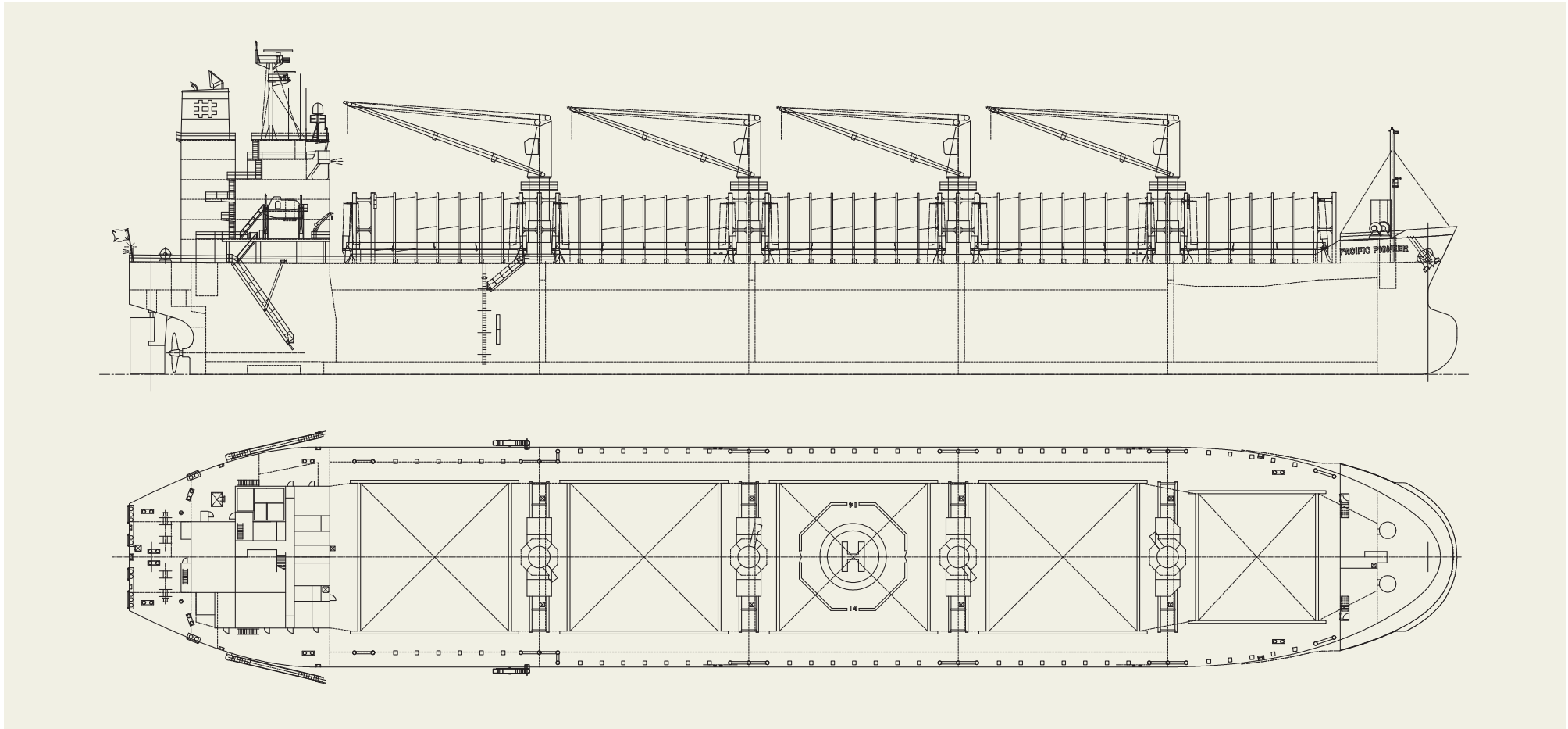
PACIFIC PIONEER 38,000 DWT Bulk Carrier 47

[Contents](#)

[By Builder](#)

[By Ship Type](#)



PACIFIC PIONEER 38,000 DWT Bulk Carrier 47[Contents](#)[By Builder](#)[By Ship Type](#)**PRINCIPAL PARTICULARS**

Depth (mld.).....	29.8 m	MCR (kw × rpm).....	5,920 x 106
Gross tonnage.....	23,579	Speed (service).....	14.25 knots
Deadweight.....	37,534	Classification.....	NK
		Builder:	Shimanami Shipyard Co., Ltd.

LAKE GRASSMERE 40,000 DWT Bulk Carrier 48

[Contents](#)

[By Builder](#)

[By Ship Type](#)

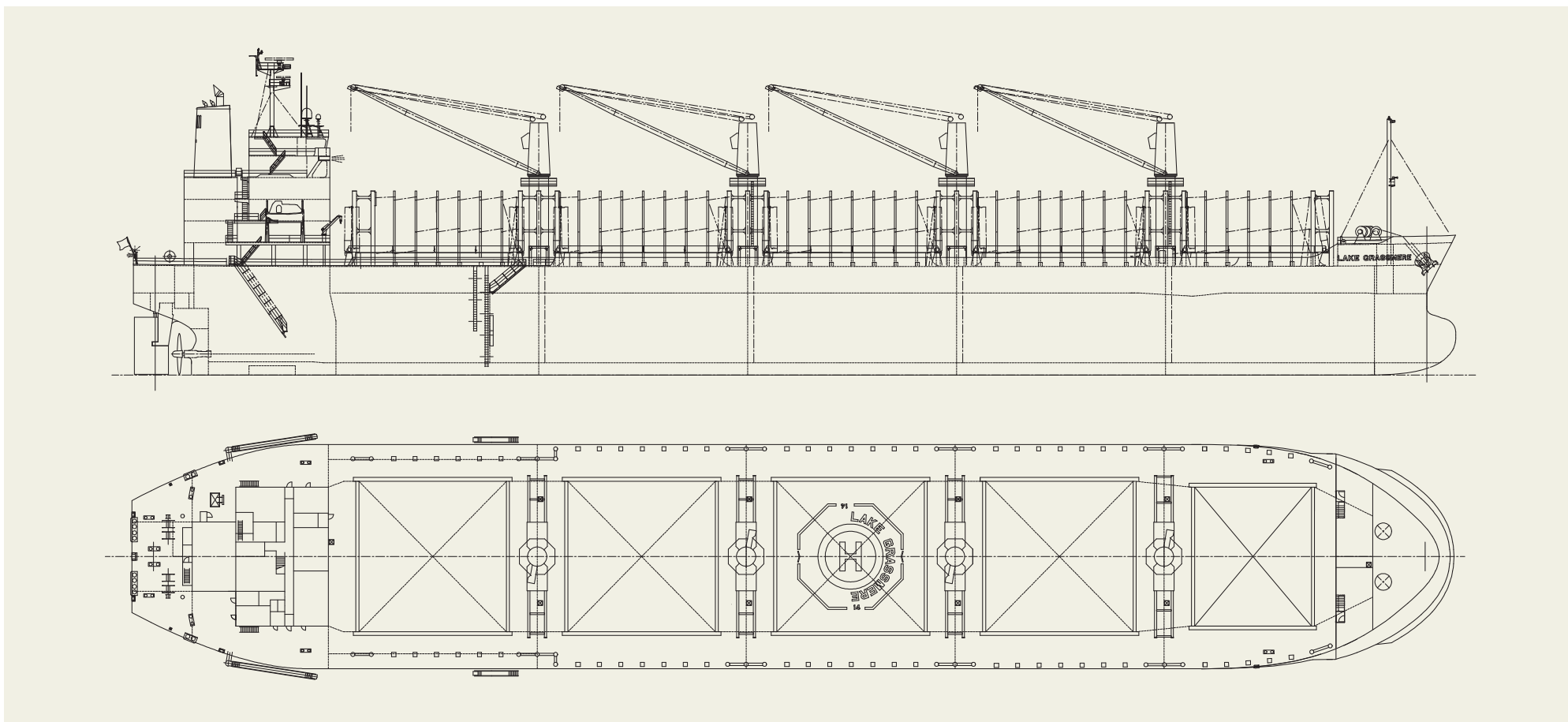


LAKE GRASSMERE 40,000 DWT Bulk Carrier 48

Contents

By Builder

By Ship Type

**PRINCIPAL PARTICULARS**

Breadth (mld.).....	31 m	MCR (kw x rpm)	5,150 x 103
Depth (mld.).....	15 m	Speed (service).....	14 knots
Gross tonnage.....	25,006	Classification	NK
Deadweight.....	40,177	Builder.....	Imabari Shipbuilding Co., Ltd.

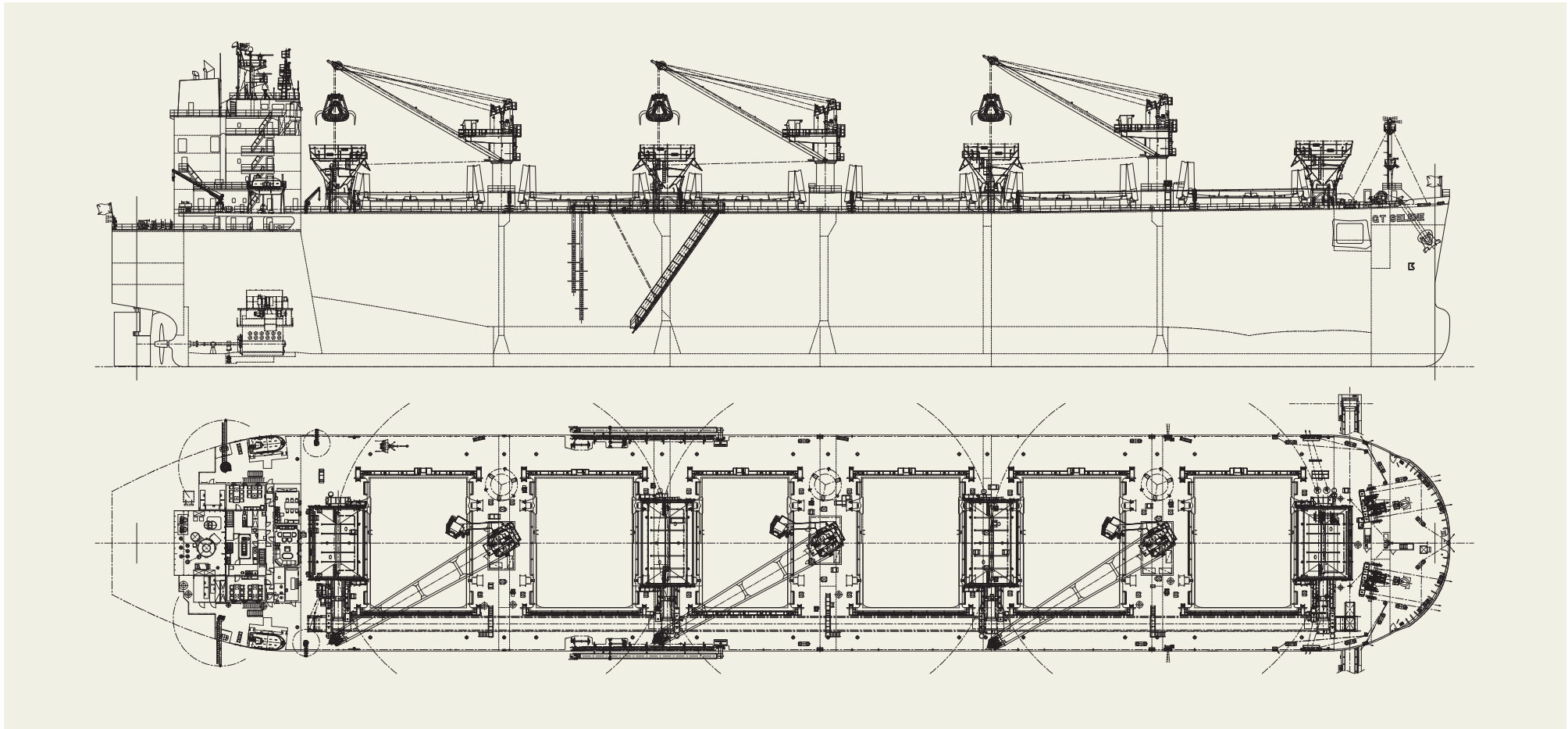
GT SELENE 3,600,000 C.F. TYPE WOODCHIP CARRIER 58

[Contents](#)

[By Builder](#)

[By Ship Type](#)



GT SELENE 3,600,000 C.F. TYPE WOODCHIP CARRIER 58[Contents](#)[By Builder](#)[By Ship Type](#)**PRINCIPAL PARTICULARS**

Breadth (mld.).....	32.24 m	Deadweight.....	49,324
Depth (mld.).....	22.9 m	Speed (service).....	14.5 knots
Gross tonnage.....	41,273	Classification.....	NK
		Builder.....	Iwagi Zosen Co., Ltd.

MAERSK NORESUND 2,020 TEU Containership 61

[Contents](#)

[By Builder](#)

[By Ship Type](#)

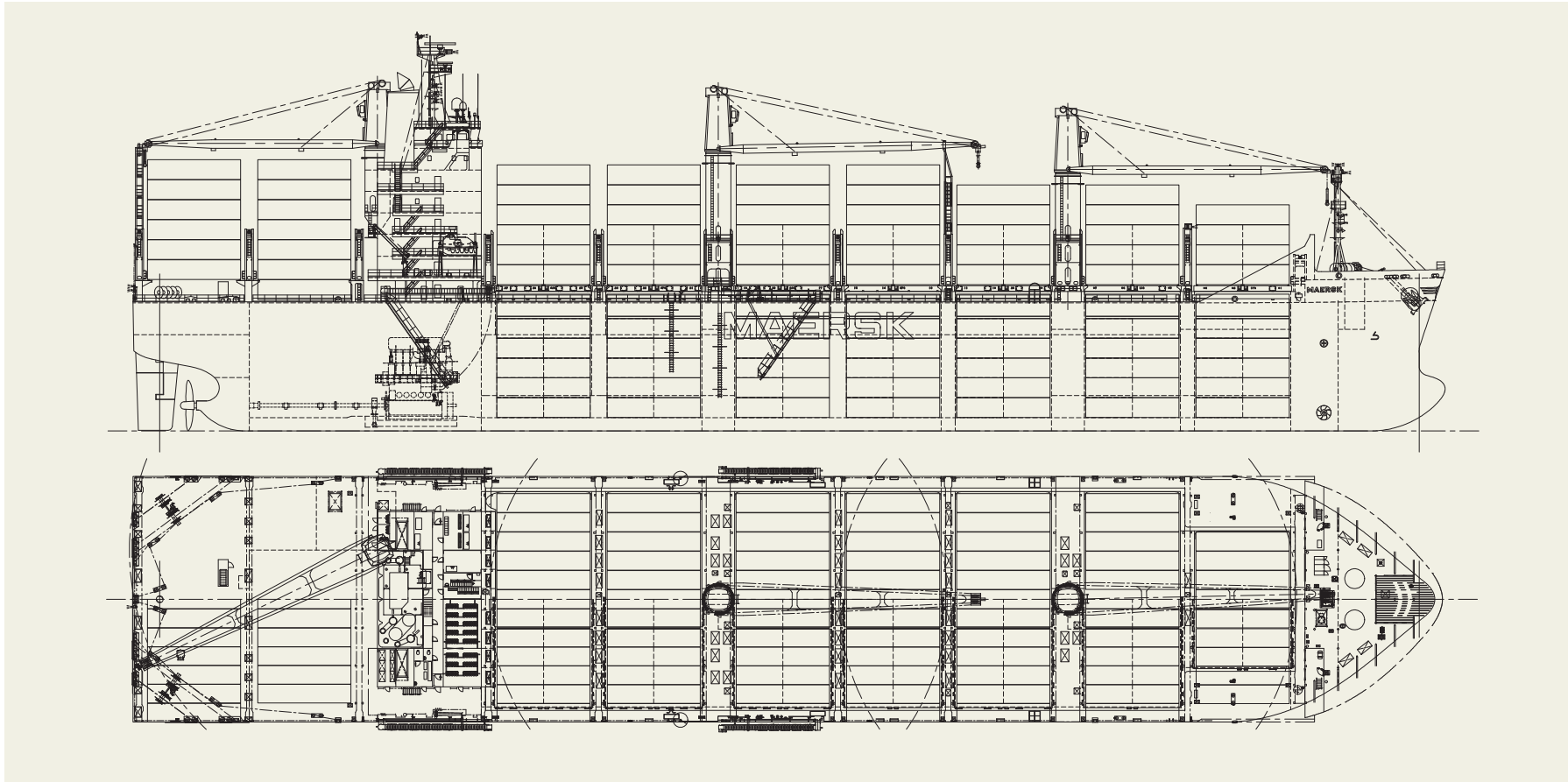


MAERSK NORESUND 2,020 TEU Containership **61**

Contents

By Builder

By Ship Type



PRINCIPAL PARTICULARS

Breadth (mld.)..... 32.2 m
 Depth (mld.)..... 16.8 m
 Gross tonnage.....25,805
 Deadweight.....28,697

MCR (kw x rpm) 13,500 x 102
 Speed (service)..... 18 knots
 Classification.....NK
 Loading capacity (container).....2,086 TEU
 Builder:Imabari Shipbuilding Co., Ltd.

ONE INFINITY 24,000 TEU Containership 62

[Contents](#)

[By Builder](#)

[By Ship Type](#)

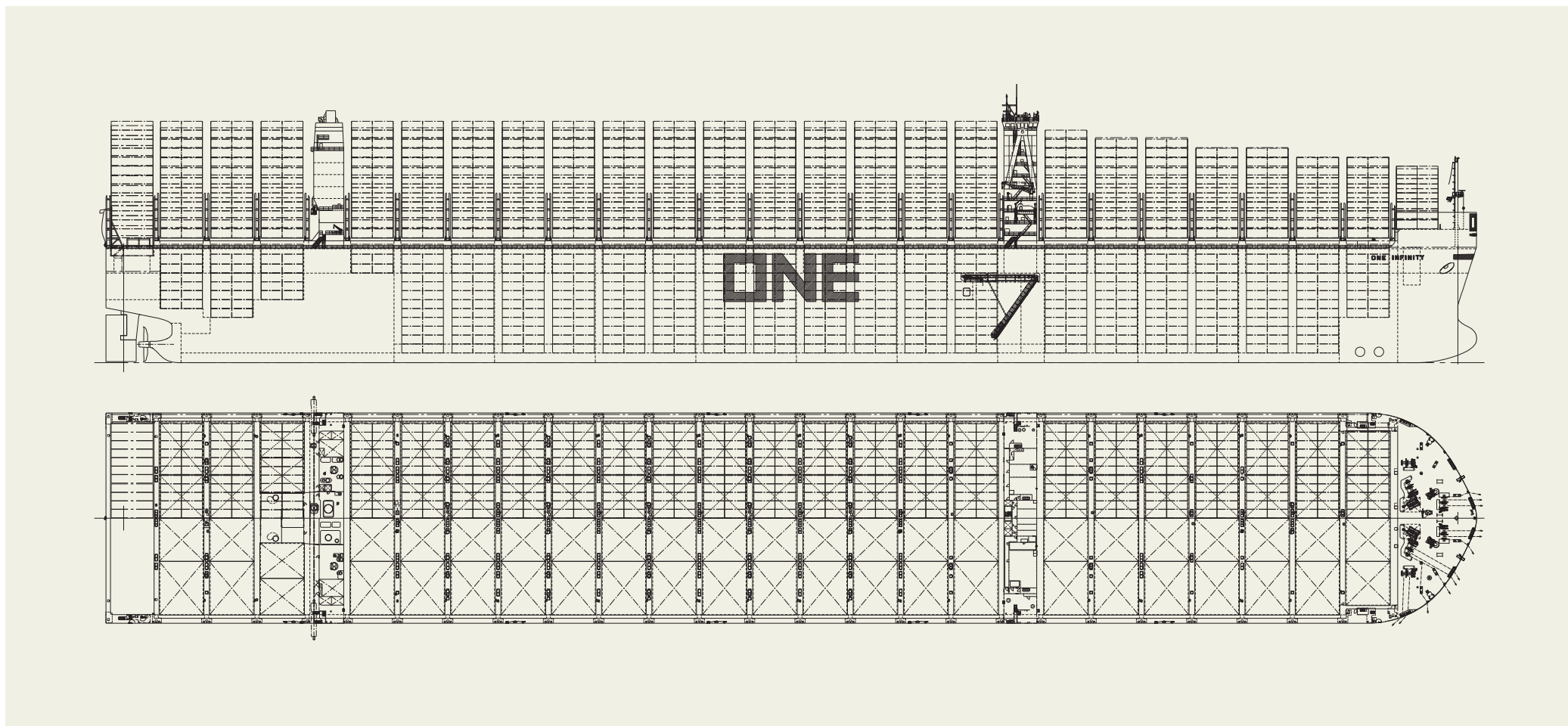


ONE INFINITY 24,000 TEU Containership 62

Contents

By Builder

By Ship Type



PRINCIPAL PARTICULARS

Breadth (mld.).....61.4 m
 Depth (mld.).....33.2 m

Classification.....DNV
 Loading capacity (container).....24,136 TEU
 Builder:Imabari Shipbuilding Co., Ltd.

EVER FULL 11,000 TEU Containership 63

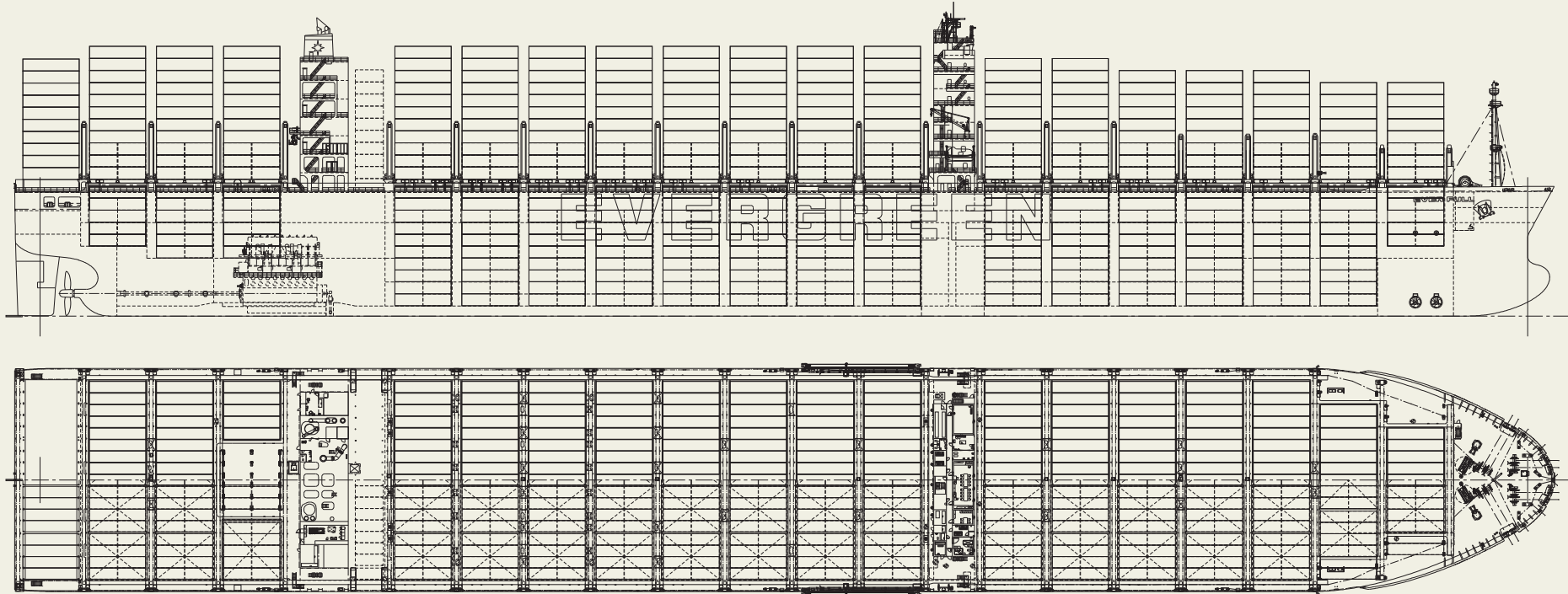
[Contents](#)

[By Builder](#)

[By Ship Type](#)



EVER FULL 11,000 TEU Containership 63

[Contents](#)
[By Builder](#)
[By Ship Type](#)


PRINCIPAL PARTICULARS

Breadth (mld.).....	48.4 m	MCR (kw x rpm)	41,080 x 76
Depth (mld.).....	26.8 m	Speed (service).....	23 knots
Gross tonnage.....	116,295	Classification	NK
Deadweight.....	130,573	Loading capacity (container).....	11,888 TEU
		Builder	Imabari Shipbuilding Co., Ltd.

CENTURY HIGHWAY GREEN 7,000 CARS TYPE LNG Dual-fuelled Vehicles Carrier 67

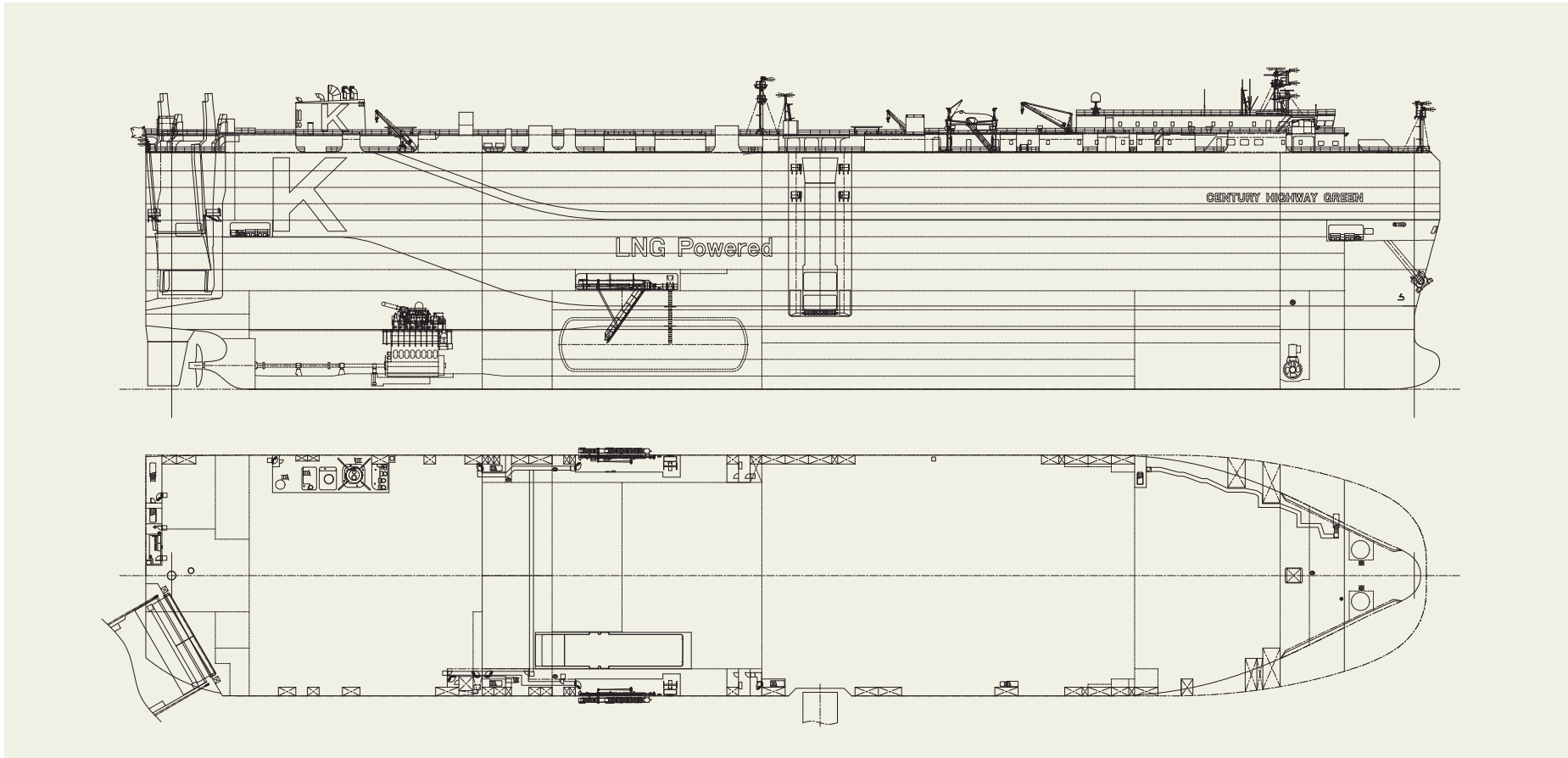
[Contents](#)

[By Builder](#)

[By Ship Type](#)



CENTURY HIGHWAY GREEN 7,000 CARS TYPE LNG Dual-fuelled Vehicles Carrier 67

[Contents](#)
[By Builder](#)
[By Ship Type](#)


PRINCIPAL PARTICULARS

Breadth (mld.).....	37.2 m	MCR (kw x rpm)	9,380 x 92.0
Depth (mld.).....	36.51 m	Speed (service).....	18 knots
Gross tonnage.....	73,515	Classification	NK
Deadweight.....	16,844	HBuilder	Tadotsu Shipyard Co., Ltd.

SHURI 15,800 GT TYPE Ro/Ro Cargo Ship 69

[Contents](#)

[By Builder](#)

[By Ship Type](#)

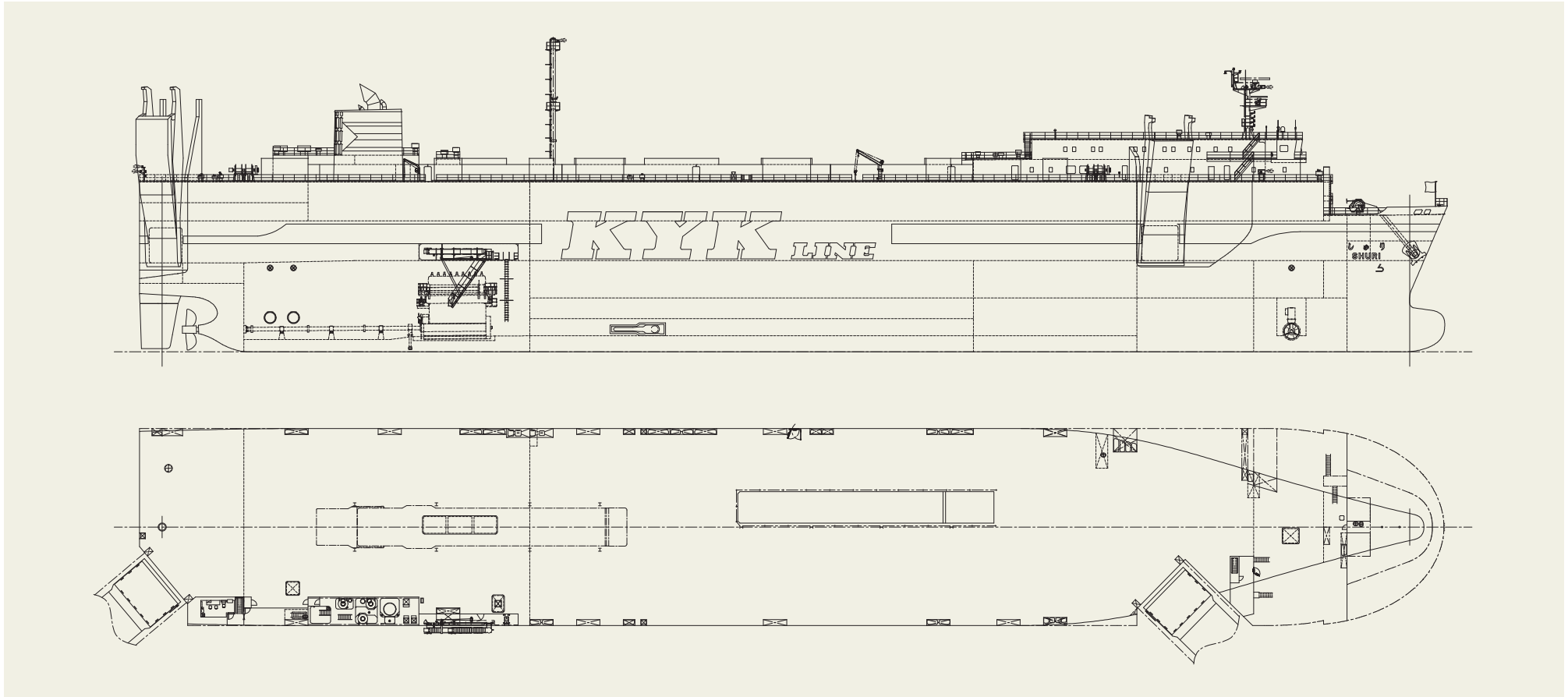


SHURI 15,800 GT TYPE Ro/Ro Cargo Ship 69

Contents

By Builder

By Ship Type



PRINCIPAL PARTICULARS

Breadth (mld.).....	27 m	MCR (kw x rpm)	14,940 x 127
Depth (mld.).....	23.27 m	Speed (service).....	21.1 knots
Gross tonnage.....	15,816	Classification	NK
Deadweight.....	7,073	Builder.....	I-S Shipyard Co., Ltd.